

**CLAYTON PARK - FAIRVIEW SCHOOL**  
**SST PRESENTATION**  
October 30, 2025





# TABLE OF CONTENTS

- Design Drivers and Vision
- What We Heard
- Space Program
- Site Plan Updates
- Building Design Approach
- Next Steps

## AGENDA

## DESIGN DRIVERS AND VISION

# Introduction

The proposed Clayton Park Fairview School is a new 130,000-square-foot facility designed to serve students in grades 6 through 9. It will be located on the west side of Radcliffe Drive, north of Raleigh Court and Berkshire Close, in Clayton Park, Halifax, Nova Scotia. The total site area is approximately 5.67 acres. The school is intended to relieve enrollment pressures at the nearby Park West P–9 School and serve as both an exemplary learning environment and a welcoming community hub.

## Guiding Principles

### A Culture of Collaboration and Transparency

Promote open communication, fairness, and mutual respect throughout the project. Prioritize transparency in decision-making and maintain strong collaboration from design through construction and post-occupancy. Engage all voices, especially students and educators, early and meaningfully to ensure the space reflects their needs and aspirations.



Exterior Render of school entry and cafeteria- finishes to be determined

## GUIDING PRINCIPLES



# A Community Hub — Inclusive, Local, Lasting

Create a school that feels like a proud, natural extension of its community — welcoming, inclusive, accessible, and reflective of local values, resources, and efforts. It should serve as a central, inspiring place that instills pride in those who design, build, and use it, while standing as a provincial benchmark and lasting legacy.

# Learner-Centered, Functional, and Adaptable

Support EECD’s Education philosophy. Design adaptable, efficient, and highly functional spaces to support a wide range of teaching approaches, learning styles, and learner well-being. Prioritize intuitive layouts and flexible infrastructure that enhance educational delivery now and into the future.



Interior Render of entry lobby- finishes to be determined



## Sustainable, Durable, and Simple by Design

Design and construct a high-performance, energy-efficient building that is simple to operate and maintain. Balance ambitious energy targets and environmental goals with practical, cost-effective systems designed for long-term durability and flexibility. Prioritize healthy indoor environmental quality, supporting curriculum delivery and learner well-being with fresh air and natural light.

## High-Value, Purposeful Investment

Achieve maximum value for the expenditure of provincial funds by making efficient, well-reasoned design decisions that maximize educational value within the project’s budget and timeline. Emphasize life-cycle value, spatial efficiency, and constructibility to ensure long-term impact and educational success.



Exterior Render of courtyard and outdoor space- finishes to be determined

## GUIDING PRINCIPLES



**WHAT WE HEARD**

## WHAT WE HEARD

- Playfields serving two schools
- Site furnishings supporting maintenance & operations
- Improving safety & security at Mainland Trail & courtyard
- Views into and seating within gym
- Operable partition in the gym
- Number of washrooms required



# PROGRAM SUMMARY

## *Learning spaces*

- 37 multi-purpose learning rooms (classrooms)
- 3 visual arts rooms
- 3 music rooms
- 1 family studies, textiles & nutrition
- 4 multi-purpose science labs
- 3 technology education labs (2 innovation labs & 1 production lab)

## *Assembly Spaces*

- Cafeteria and stage
- Triple gymnasium
- Library

## *Student Services*

- 3 learning centres
- Schools Plus and counseling

## *General office & staff rooms*

## PROGRAM SUMMARY

## **SITE PLAN UPDATES**





# SITE PLAN





**RENDER - SOUTH WEST AERIAL PERSPECTIVE**

*finishes to be determined*

2025.10.30

CLAYTON PARK FAIRVIEW SCHOOL  
SST PRESENTATION





**RENDER - NORTH EAST AERIAL PERSPECTIVE**

*finishes to be determined*

2025.10.30

CLAYTON PARK FAIRVIEW SCHOOL  
SST PRESENTATION



**LYDON LYNCH** | **CS&P** Architects  
ARCHITECTS





**RENDER - SOUTH ENTRY**

*finishes to be determined*

2025.10.30

CLAYTON PARK FAIRVIEW SCHOOL  
SST PRESENTATION



**LYDON LYNCH** | **CS&P Architects**  
ARCHITECTS





**RENDER - OUTDOOR AREA**

*finishes to be determined*

2025.10.30

CLAYTON PARK FAIRVIEW SCHOOL  
SST PRESENTATION



**LYDON LYNCH** | **CS&P** Architects  
ARCHITECTS



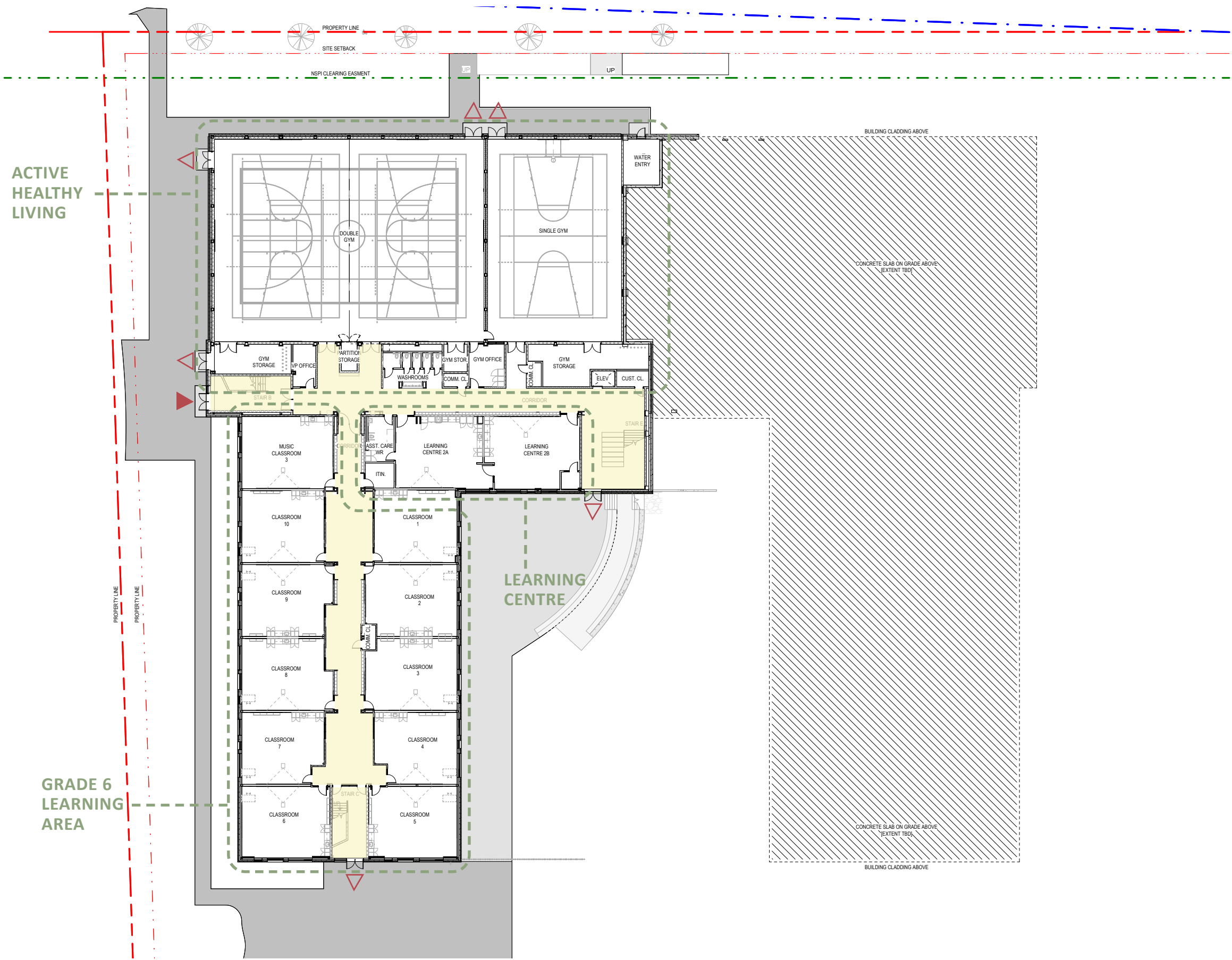


**RENDER - COURTYARD SEATING**  
*finishes to be determined*  
 2025.10.30  
 CLAYTON PARK FAIRVIEW SCHOOL  
 SST PRESENTATION



**BUILDING DESIGN**

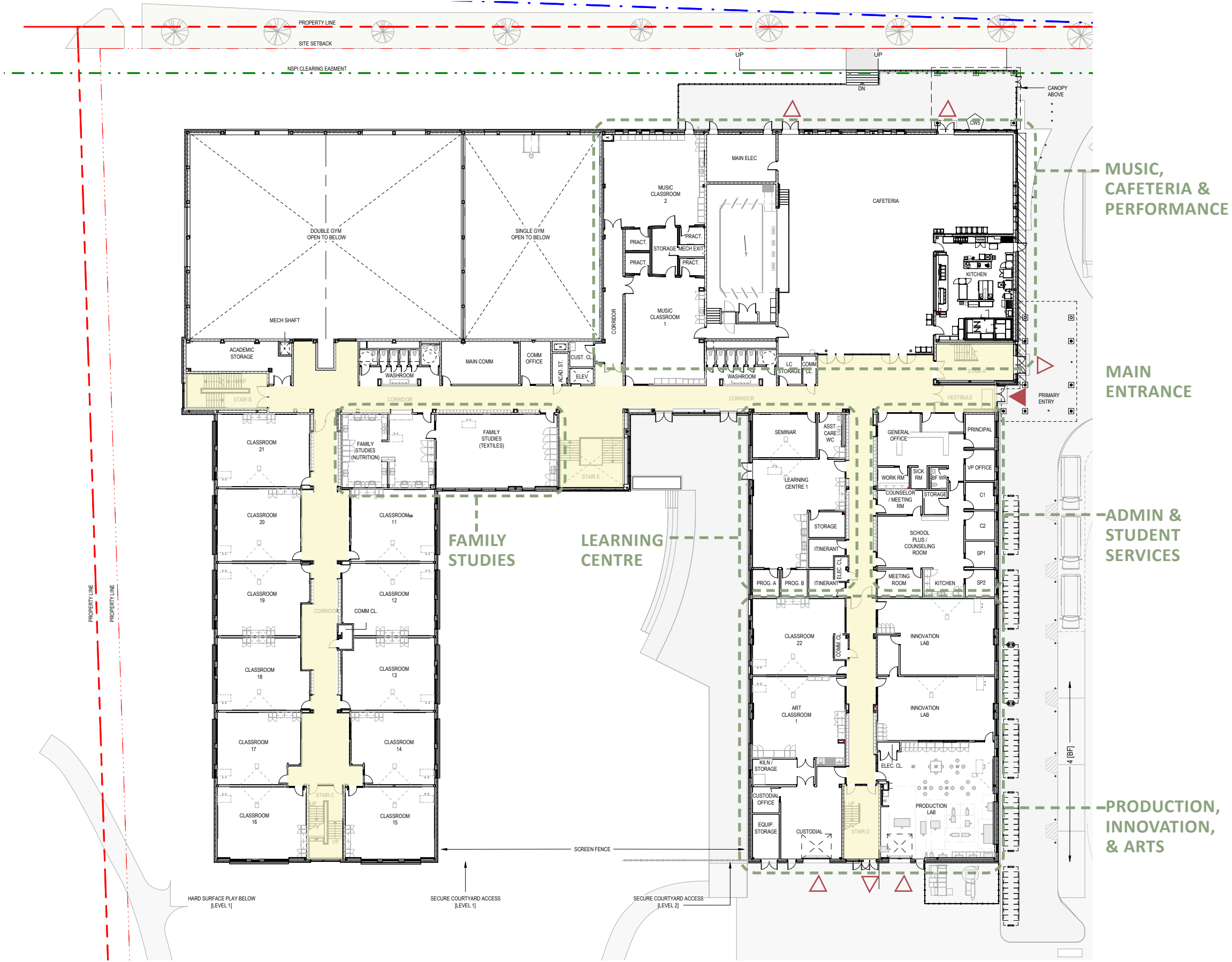
LEVEL 1



FLOOR PLANS



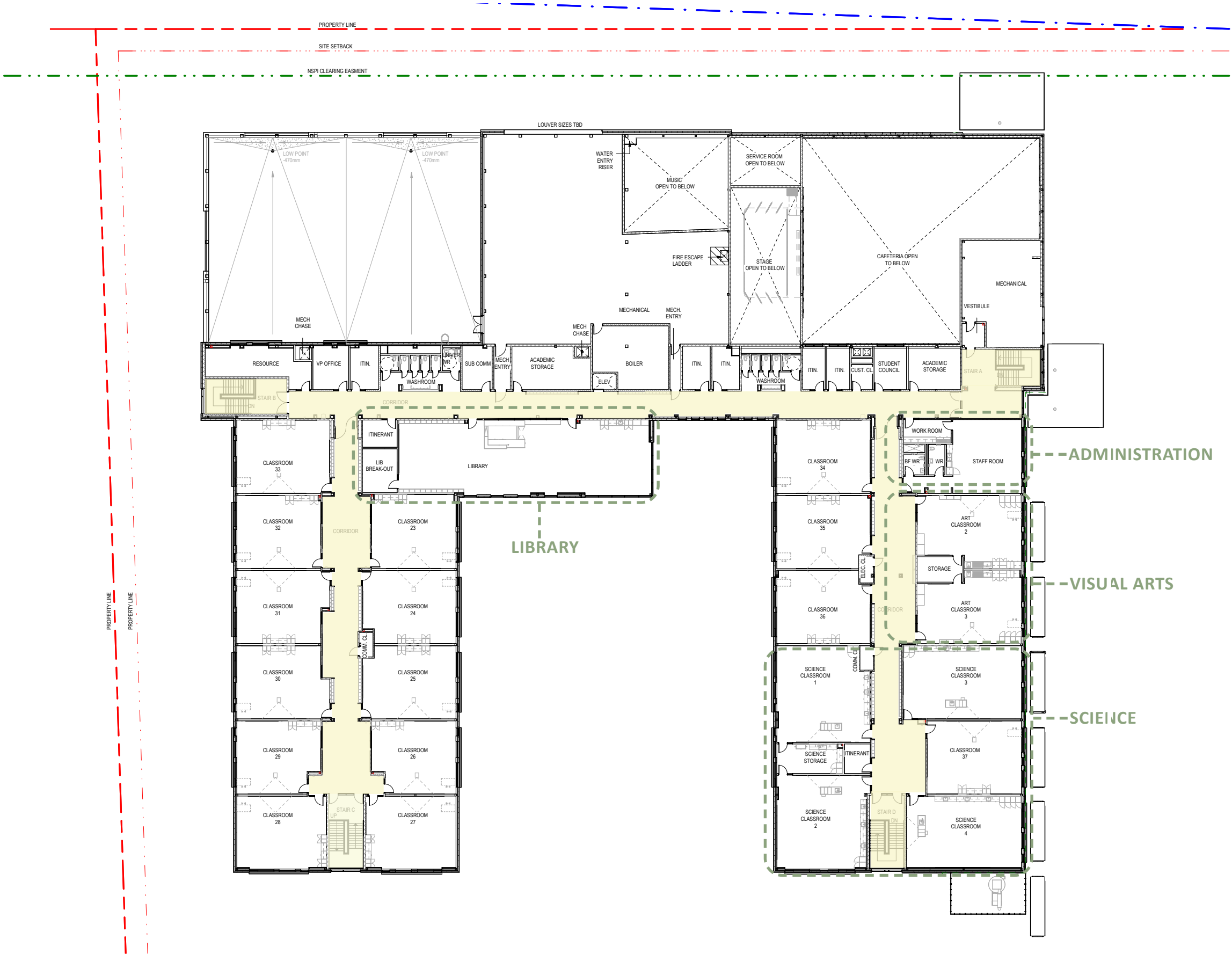
LEVEL 2



FLOOR PLANS

LEVEL 3

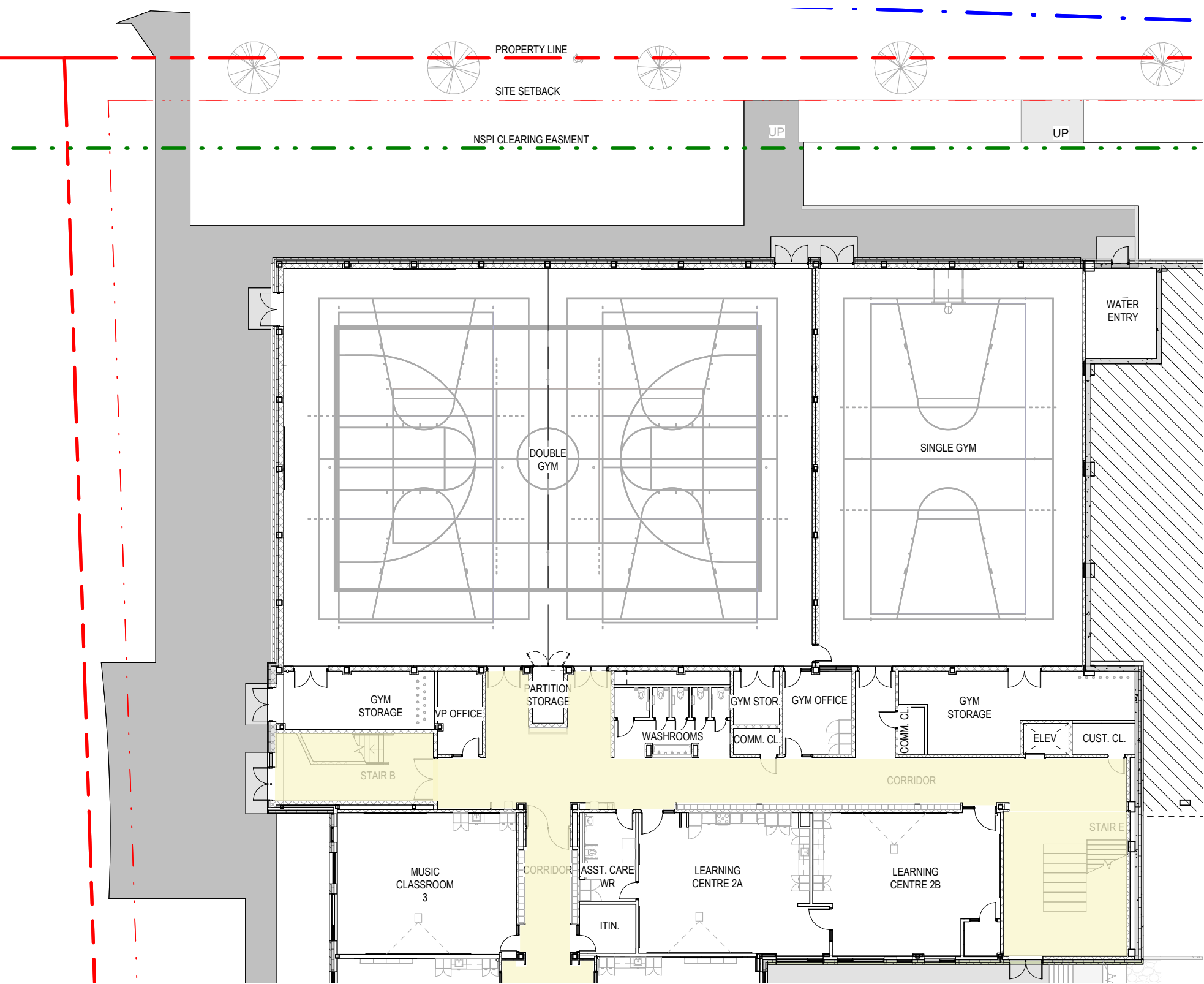
GFA CALCULATION		
Name	Area ft2	Area m2
01 - LEVEL 1	32,856 ft²	3,052.47 m²
02 - LEVEL 2	51,004 ft²	4,738.38 m²
03 - LEVEL 3	45,776 ft²	4,252.76 m²
TOTAL	129,636 ft²	12,043.61 m²
PROGRAM TARGET GFA	130,853 ft²	12,157 m²
BUILDING FOOTPRINT	63,400 ft²	5,890 m²



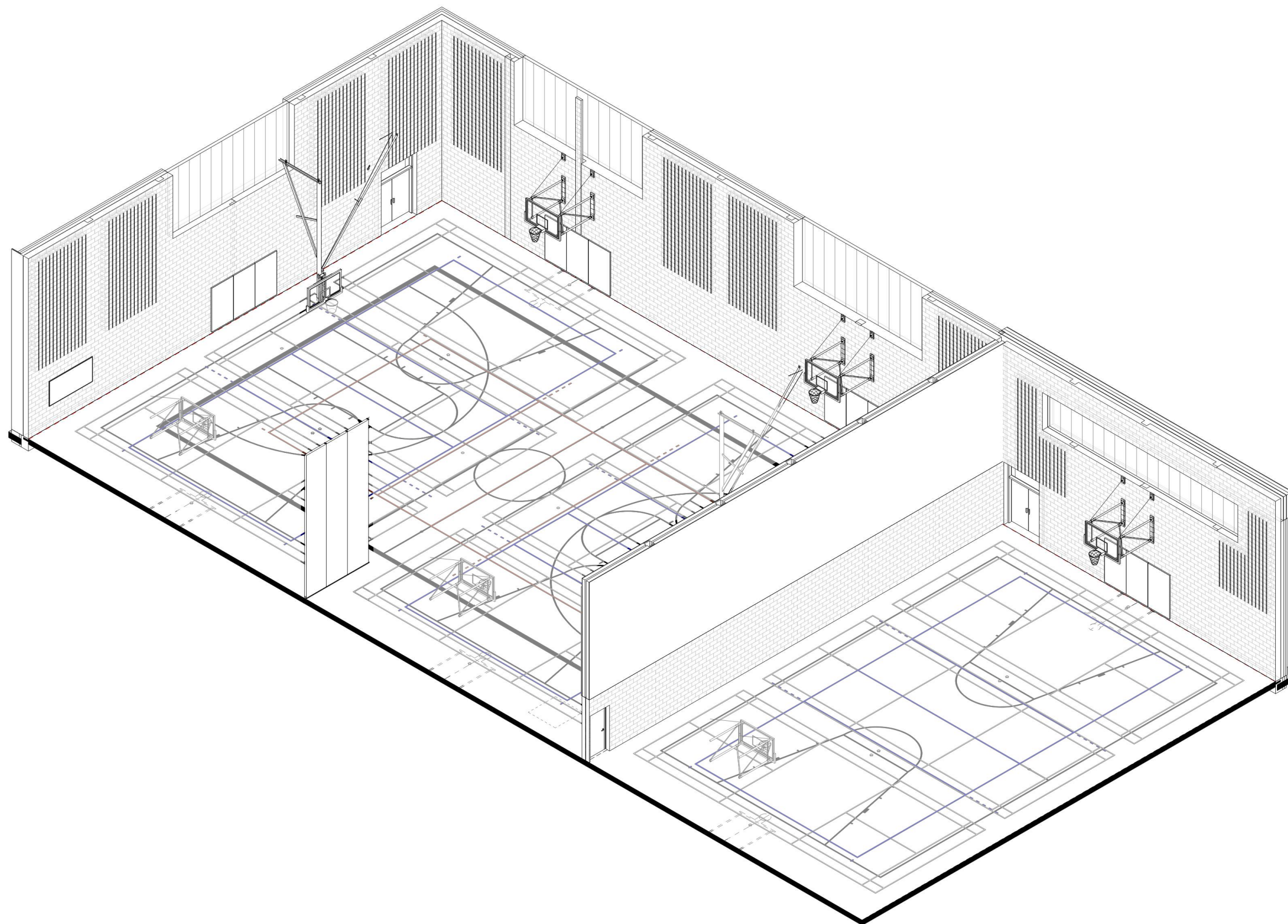
FLOOR PLANS



Level 1 Floor Plan



FLOOR PLANS



## AXONOMETRIC - GYMNASIUM



Level 1 Floor Plan



FLOOR PLANS





rsc  
construction

LYDON LYNCH  
ARCHITECTS

CS&P Architects

**RENDER - CLASSROOM WING**  
*finishes to be determined*  
2025.10.30  
CLAYTON PARK FAIRVIEW SCHOOL  
SST PRESENTATION

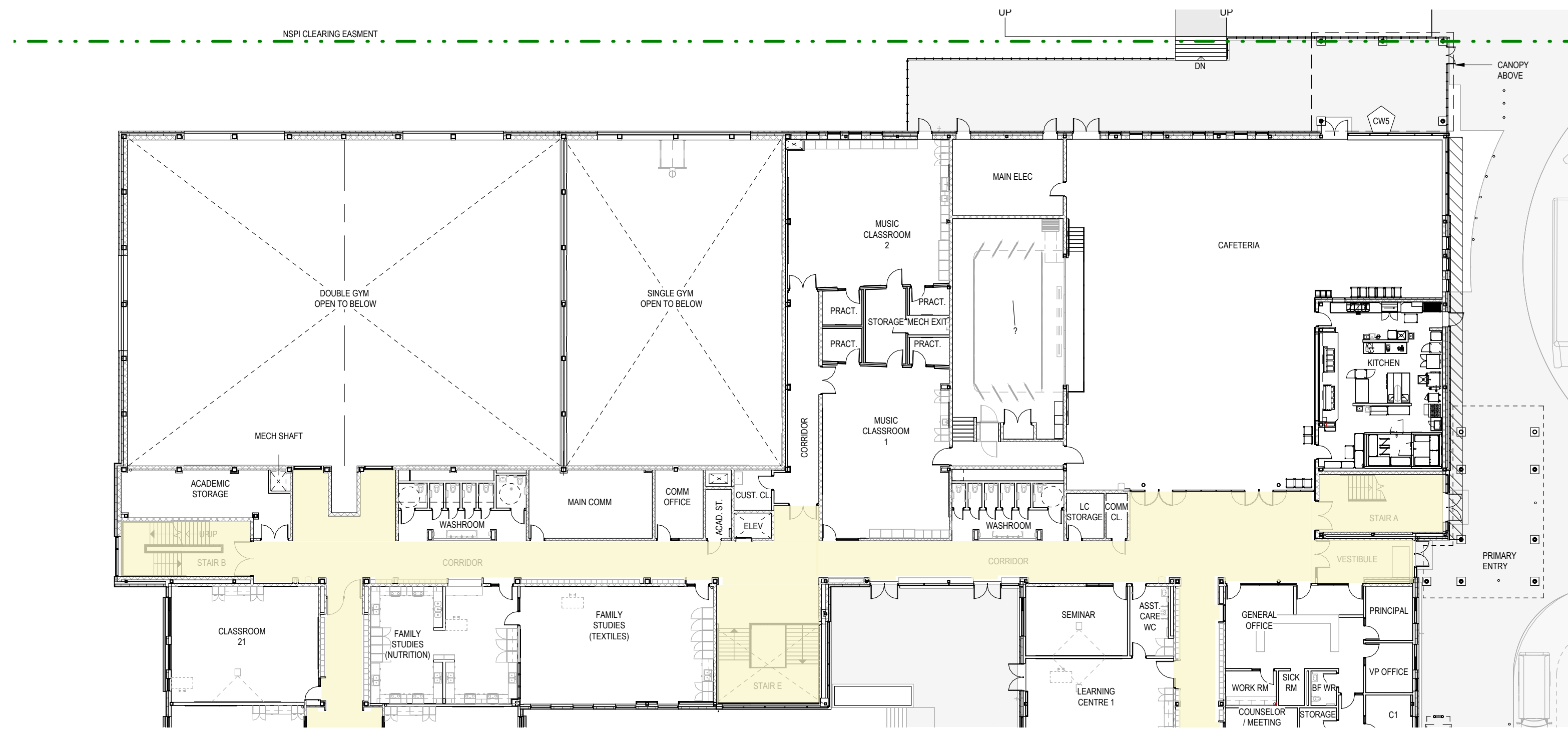
rsc  
construction

LYDON LYNCH  
ARCHITECTS

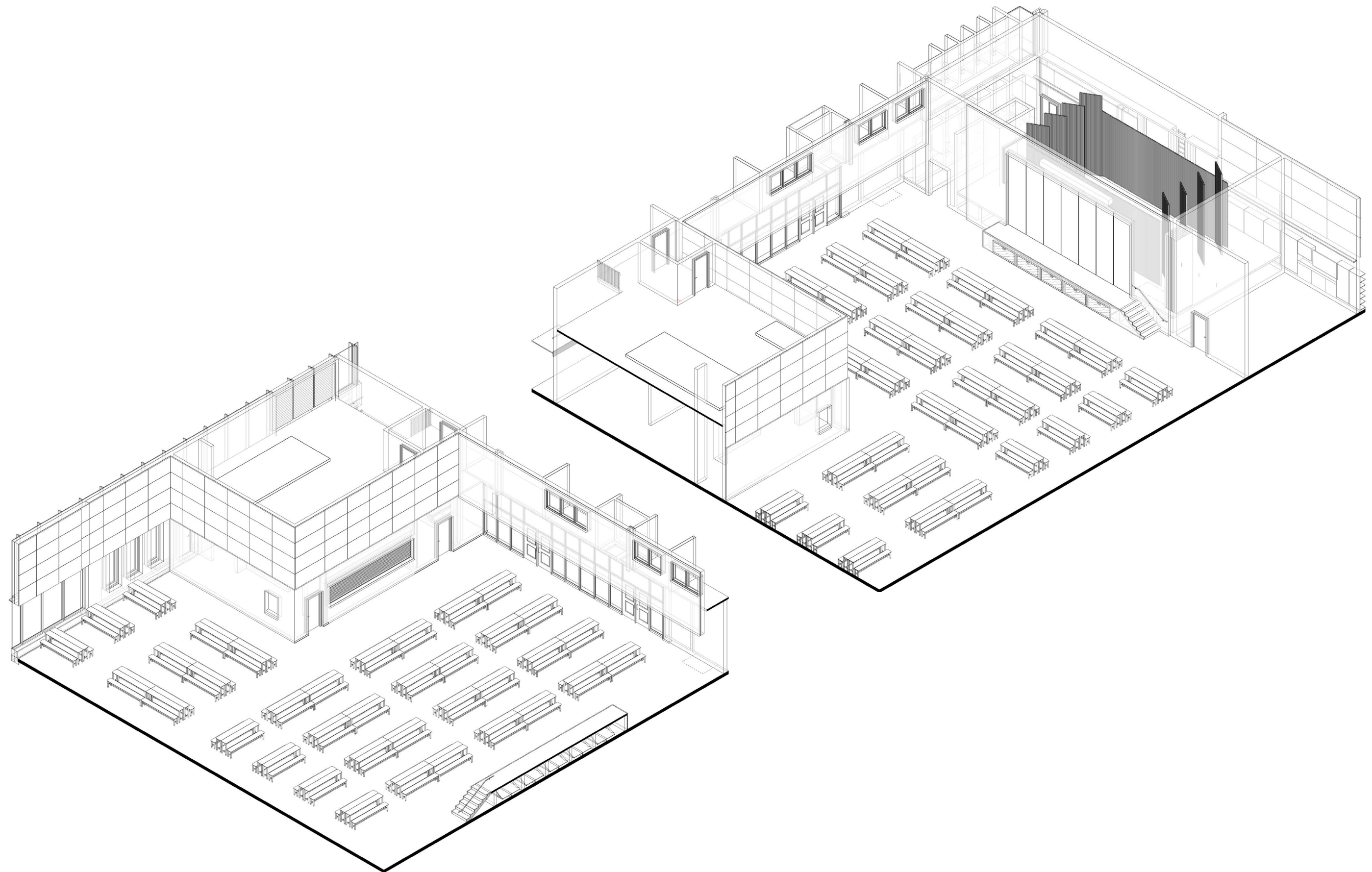
CS&P Architects



Level 2 Floor Plan



FLOOR PLANS



## AXONOMETRIC - CAFETERIA

2025.10.30  
CLAYTON PARK FAIRVIEW SCHOOL  
SST PRESENTATION





**LYDON LYNCH**  
ARCHITECTS

**CS&P Architects**

**RENDER - ENTRY AND CAFETERIA**  
*finishes to be determined*  
2025.10.30  
CLAYTON PARK FAIRVIEW SCHOOL  
SST PRESENTATION

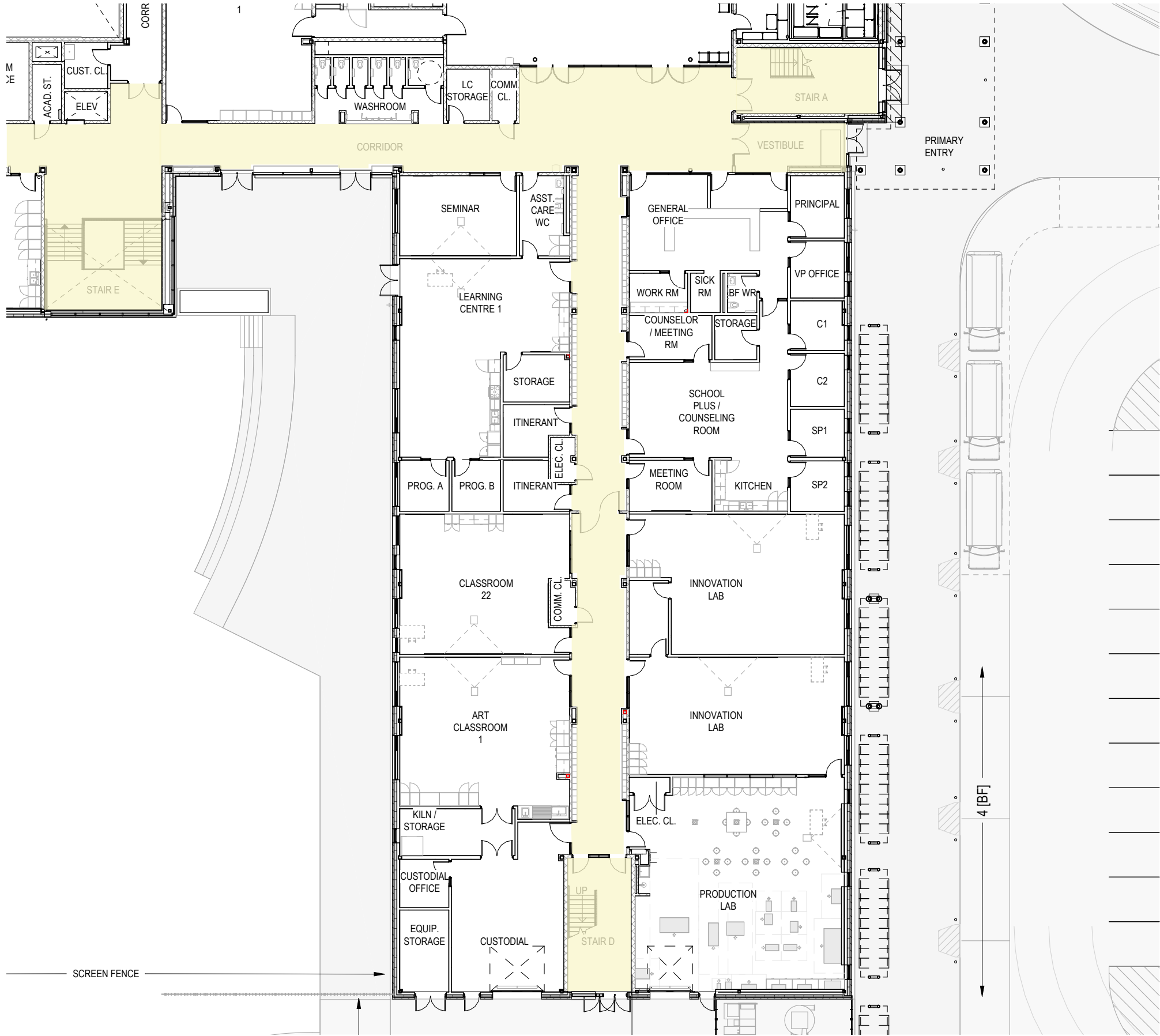


**LYDON LYNCH**  
ARCHITECTS

**CS&P Architects**



Level 2 Floor Plan



FLOOR PLANS






**LYDON LYNCH** **CS&P Architects**  
ARCHITECTS


**LYDON LYNCH** **CS&P Architects**  
ARCHITECTS

**RENDER - ADMIN OFFICE**

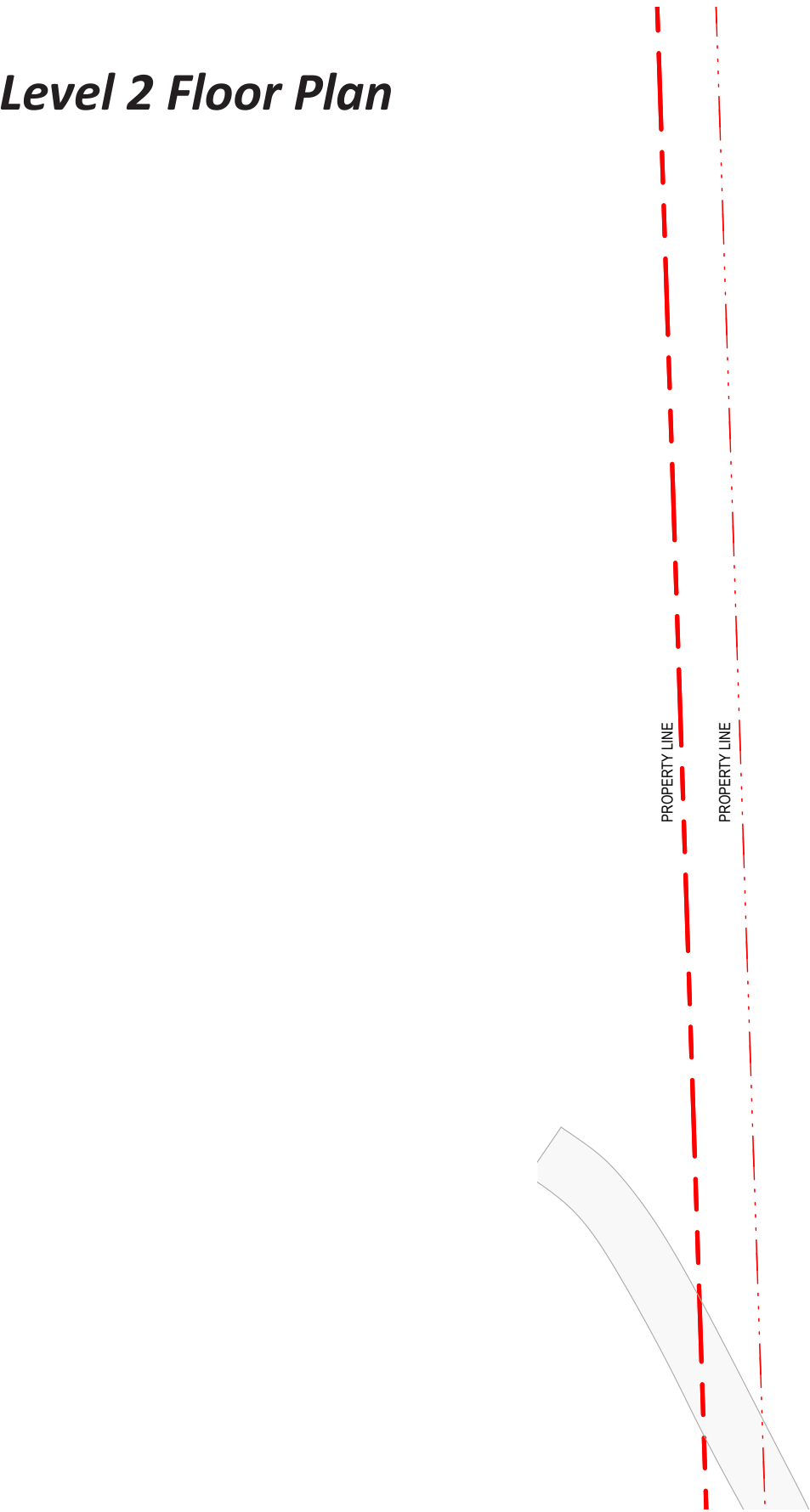
*finishes to be determined*

2025.10.30

**CLAYTON PARK FAIRVIEW SCHOOL  
SST PRESENTATION**



Level 2 Floor Plan



FLOOR PLANS





**LYDON LYNCH**  
ARCHITECTS

**CS&P Architects**

**RENDER - FEATURE STAIR**

*finishes to be determined*

2025.10.30

CLAYTON PARK FAIRVIEW SCHOOL  
SST PRESENTATION



**LYDON LYNCH**  
ARCHITECTS

**CS&P Architects**



Level 3 Floor Plan



FLOOR PLANS



Level 3 Floor Plan



FLOOR PLANS





**LYDON LYNCH**  
ARCHITECTS

**CS&P Architects**

**RENDER - WASHROOM**

*finishes to be determined*

2025.10.30

CLAYTON PARK FAIRVIEW SCHOOL  
SST PRESENTATION



**LYDON LYNCH**  
ARCHITECTS

**CS&P Architects**



**NEXT STEPS**